

The Contribution of Iwi-Based Research Centres to Improving Service Delivery

26 November 2009

Dr Amohia Boulton

Overview

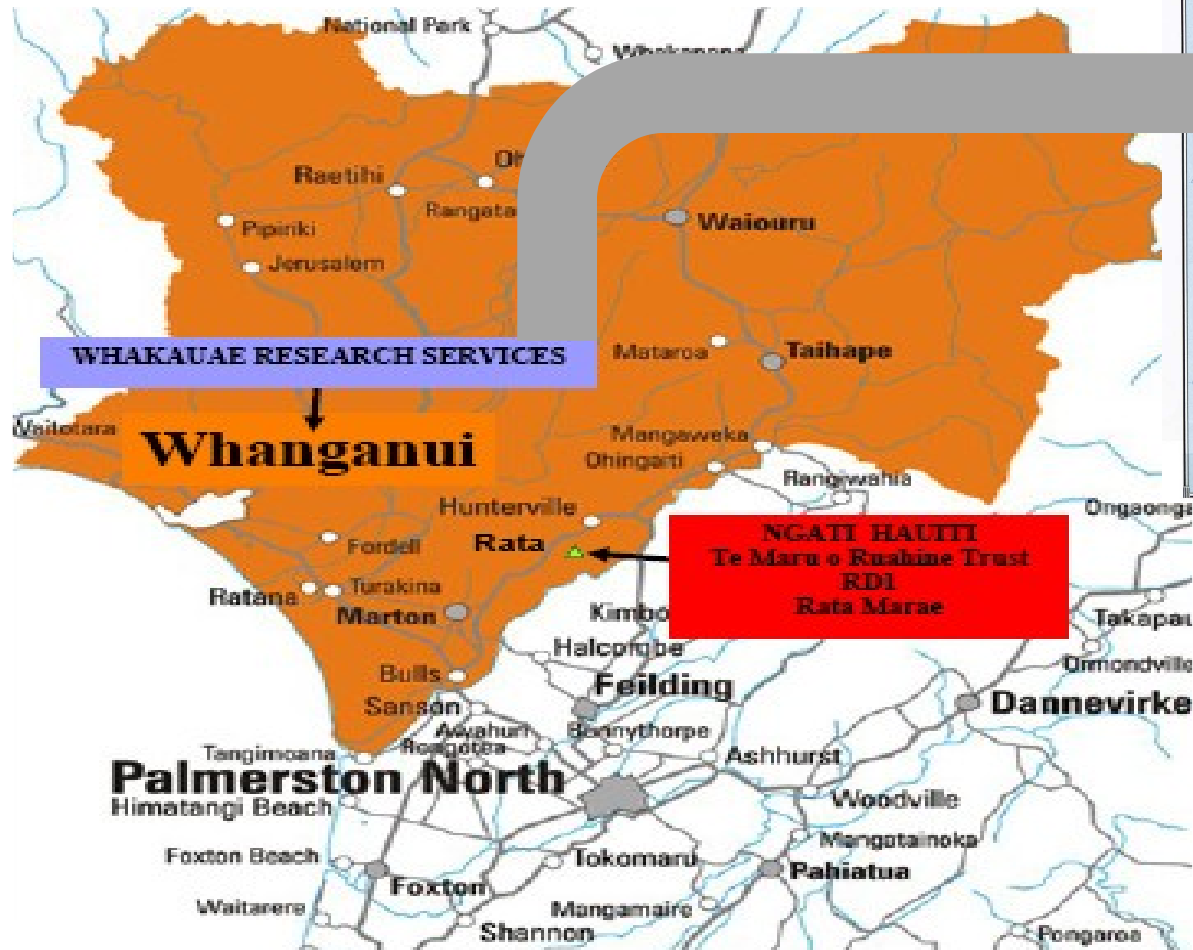
- Conducting health service research in an iwi or tribal research centre
- The contribution we make to health services research and health service delivery
- Challenges faced by iwi-based health services researchers

Whakauae Research

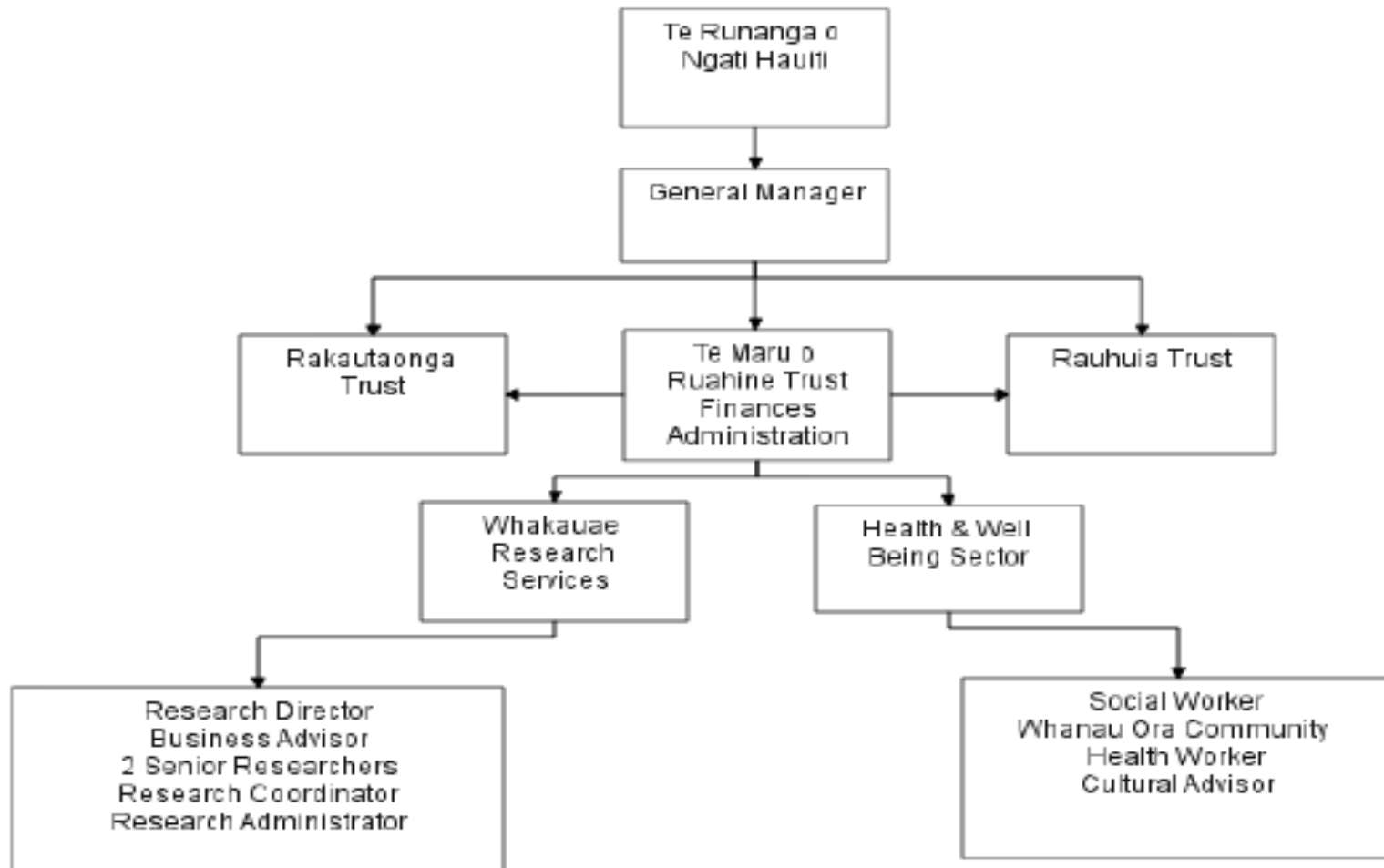


- Ngāti Hauiti – an iwi (tribe) from the central Rangitikei, Aotearoa
- Whakauae Research for Māori Health and Development – the iwi research unit for Ngāti Hauiti

Location



WRMHD



Why we are unique

- Tribally owned and accountable
- Required to be responsive to our population, to those who give us the mandate to operate
- Overall goal of assisting Māori to reach their potential
- Community development approach to health services research

Why we are unique

- Direct contact with our community, with Māori health providers, with health practitioners and with consumers
- Relatively few resources, infrastructure
- Control of data, use of data, analysis and interpretation of research findings

How We Contribute

- Training and development of the Māori health workforce as **practitioners**
 - evaluation capacity and capability
 - Needs Assessments
 - project planning
- Ultimate aim is to improve the kaimahi/worker's ability to be an effective health practitioner

The Community Hub Project

- An evaluation commissioned by the Northland District Health Board
 - training in evaluation methodology
 - project logic model developed with practitioners/facilitators
 - intensive face-to-face workshops and one-on-one training



How We Contribute

- Training and development of the Māori health workforce as **researchers**
 - to identify research questions of interest to their community
 - training in collection methods, data handling and analysis
 - dissemination and translation
- Ultimate aim is to enhance the skill set in the provider organisation/community

Pa Stylz

- Tobacco Cessation Project run by Te Kotuku Hauora Trust o Rangitikei
 - formative evaluation methods
 - project logic model developed with kaimahi
 - initial survey of households carried out by kaimahi
 - results disseminated at hui



Resilience Project with TOIHA

- Te Oranganui Iwi Health Authority (TOIHA)
 - our research partner in a collaborative research project investigating the concept of resilience
 - CEO as researcher (developed initial application, data collection, analysis, write-up, dissemination)
 - joint authorship
 - translational component



Other ways of contributing

- Community input into the policy advice process
- Investigator initiated research into questions of significance for community/Māori
- Growing Māori health workforce within our centre



Challenges

- Growing capacity within an increasingly pressured Māori health provider environment
- Growing our own research capacity to contribute to the realisation of Māori potential
- Remaining alert for local and international indigenous networking, partnership and collaboration opportunities

Challenges

- Ensuring a high standard of Māori/indigenous scholarship
- Ensuring we continue to add to existing knowledge, develop new knowledge
 - dissemination
 - publication
 - translation

Summary

- Constant pressure to be responsive to the needs of our community



- Pressure to publish however, our work must inform policy and practice to be of use and so be transformative
- Numerous challenges but ultimately hugely rewarding

Acknowledgements

- All our research partners, collaborators and participants and community members
- Manaia PHO
- Te Kotuku Hauora o Rangitikei
- Te Oranganui Iwi Health Authority



Contact Details

Amohia Boulton

Whakauae Research for Māori Health
and Development

amohia.whakauae@xtra.co.nz

