

# Innovation in action

Dr. Amohia Boulton  
Health Services Research Association of  
Australia and New Zealand  
End of Year Event  
2 December 2021





# Introduction

Why this programme of research, why now?

---

Conceptual framework

---

Foundational principles

---

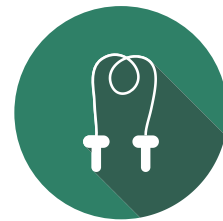
Programme elements

---

Translation, Uptake and Impact (TUI)  
Framework



# NZ Health Context



Greater demand for health equity and research which advances a health equity agenda

---



Health and Disability System Review and Waitangi Tribunal claim

- Creation of a health system that works more effectively for Māori, which reflects Māori knowledge and enhances Rangatiratanga (H&DSR)
  - Ensure the legislative and policy framework of the NZ primary health care system recognizes and provides for the Treaty of Waitangi (WAI 2575, Stage 1)
- 



Increased demand on the part of Iwi/Māori for authentic partnership, including in governance and decision-making

---



# Conceptual Framework

Waiata/Song:  
Waenga Awaawa,  
Richard Steedman 2003



# Underlying Principles



Māori, as Treaty partners, are engaged actors in a range of systems that sustain their hauora/wellbeing



Māori seek to exercise rangatiratanga by actively participating in shaping solutions around health care



Mātauranga Māori, Māori knowledge, is the central knowledge system underpinning Māori health and wellbeing and key driver of change



A universal approach to health care does not lead to improved health outcomes for Māori



Equity of health outcome is one goal, however flourishing as Māori is the overarching goal



# Programme Aim

## Research question :

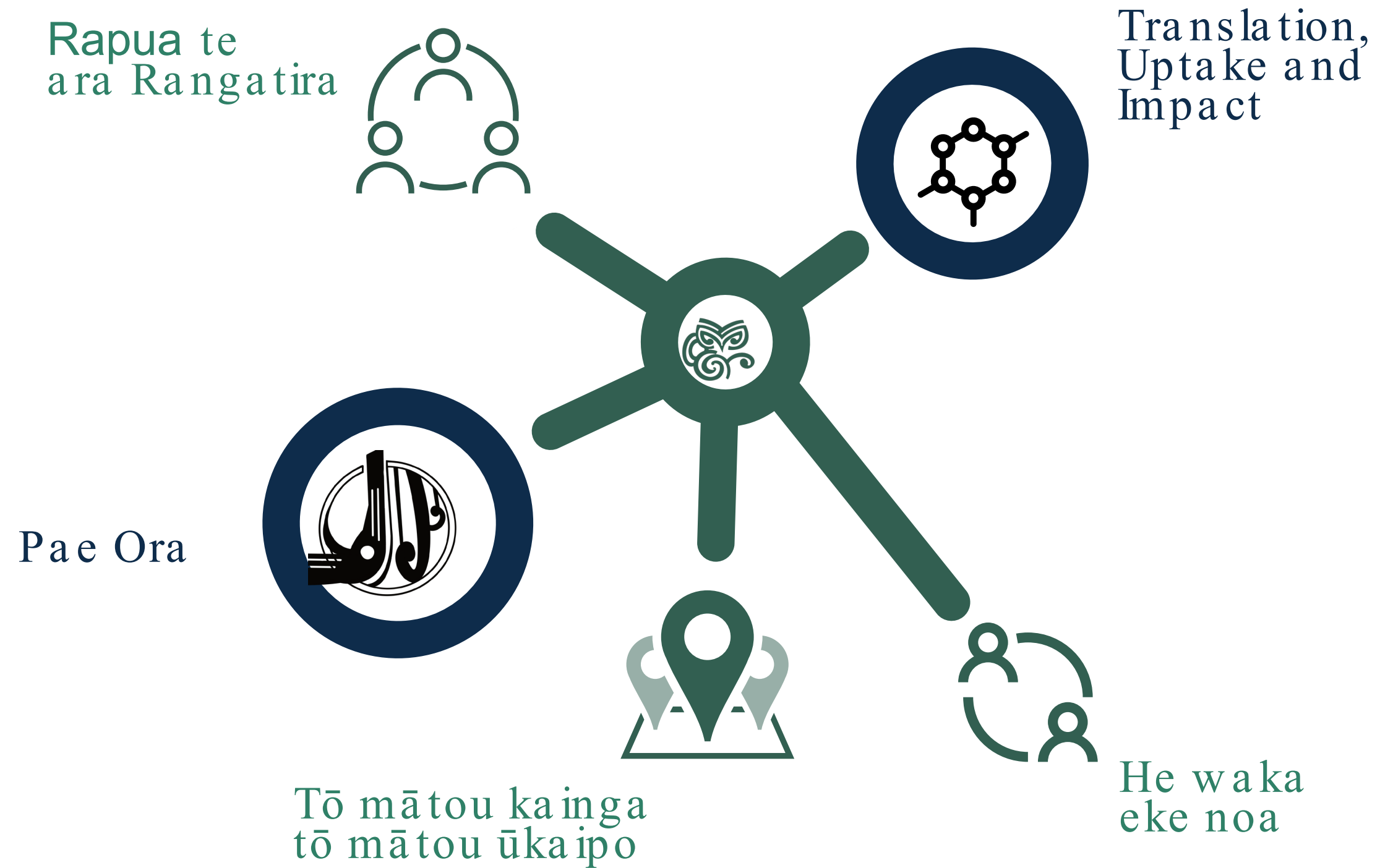
What knowledge is required to shift system responses to enable better health outcomes for Māori?

- To generate new mātauranga Māori (Māori knowledge)
- To create systems of knowledge translation that facilitate uptake of key findings to enable improved health outcomes for Māori



# Programme Structure

- 4 programme components (objectives)
- 3 research projects
- 1 long term goal



# Three Research Projects



PROJECT 1:  
RAPUA TE ARA RANGATIRA  
KIA HIKITIA AI TE ORANGA  
TANGATA

Leadership, governance and  
decision-making models to  
achieve health equity



PROJECT 2:  
TŌ MĀTOU KAINGA, TŌ  
MĀTOU ŪKAIPO

Whānau conceptions of  
home: supporting  
flourishing home  
environments



PROJECT 3:  
HE WAKA EKE NOA

Co-creating primary care  
that works for whānau  
Māori

### THE FUNDER

#### The Health Research Council of NZ

HRC have invested in Whakauae Research to lead Kia Puāwai- a 5 year grant for excellent & innovative research toward Māori health equity in Aotearoa.

### THE KAUPAPA

#### Kia Puāwai

We are addressing Māori health inequity by generating new mātauranga Māori (Māori knowledge) in order shift system responses to enable better outcomes for Māori

### THREE RESEARCH PROJECTS

#### Rapua te ara Rangatira

Leadership, governance and decision-making models to achieve health equity

Tō mātou kainga, tō mātou ūkaipo  
Whānau conceptions of home: creating nourishing home environments

#### He waka eke noa

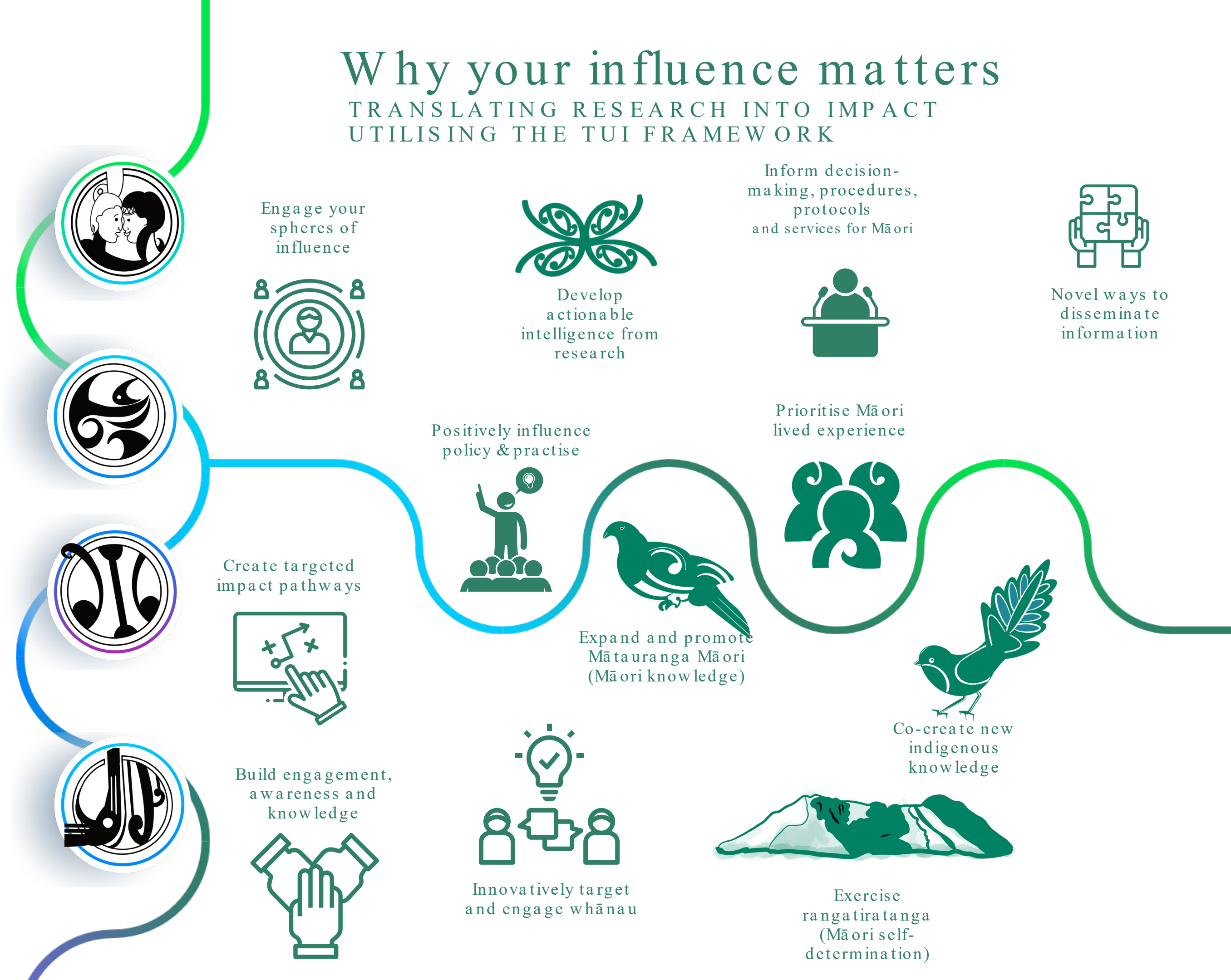
Whānau and clinician co-design: making primary care work for Māori

### OUTCOMES

The realisation of flourishing whānau, hapū and Iwi, flourishing home environments and flourishing health systems

# Why your influence matters

TRANSLATING RESEARCH INTO IMPACT  
UTILISING THE TUI FRAMEWORK



# Translation, Uptake and Impact (TUI)

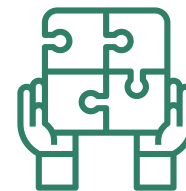
*WRS has an ongoing commitment to produce research that brings about positive change for Māori communities. ... Effective dissemination is the bridge that spans the gap between research and policy, research and practice, and between research and the lives of whānau Māori.*



Create new Indigenous knowledge



Inform decision-making  
procedures, protocols and services  
for Māori



Explore novel ways of disseminating  
research findings



# Pātai Mai

Questions and comments

Further information:  
[www.whakauae.co.nz](http://www.whakauae.co.nz)

